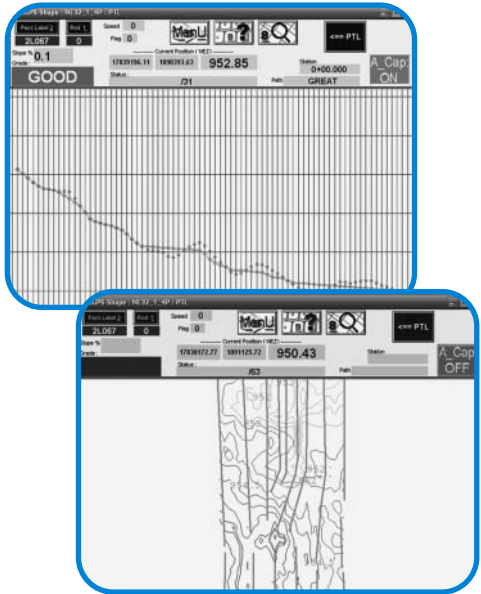


AGPS-Shape Pro™



AGPS-Shape Pro™ is a Windows-based agricultural surface-drainage, land-forming design and control program. It can use any brand of RTK GPS equipment for data input and control. AGPS-Shape Pro™ uses RTK GPS topography data and localized field-balance profiles utilizing Vertical Curve Technology™ to create optimal field-drainage, land-forming solutions that move a minimal amount of earth. Vertical Curve Technology™ utilizes natural grade breaks, the curvature of the Earth, and user-defined parameters to create drainage profile balance plans. A profile is a side view of a surface path. Each profile balance plan is created using numerous grade breaks; the more grade breaks in a design, the less soil is moved, leading to savings in time, fuel, wear-and-tear on equipment, and reduced soil compaction. Cut/fill balances are calculated for each profile balance plan, and the plans are seamlessly joined together to create the final land-forming design plan for the field. The machine control portion of the AGPS-Shape Pro™ can then automatically control earth-moving equipment to achieve the final design. Users have reported moving 50 percent less soil with AGPS-Shape Pro™.

Advanced Geo Positioning Solutions, Inc., Freemont, Ohio USA;
888-301-2477, www.agpsinc.com